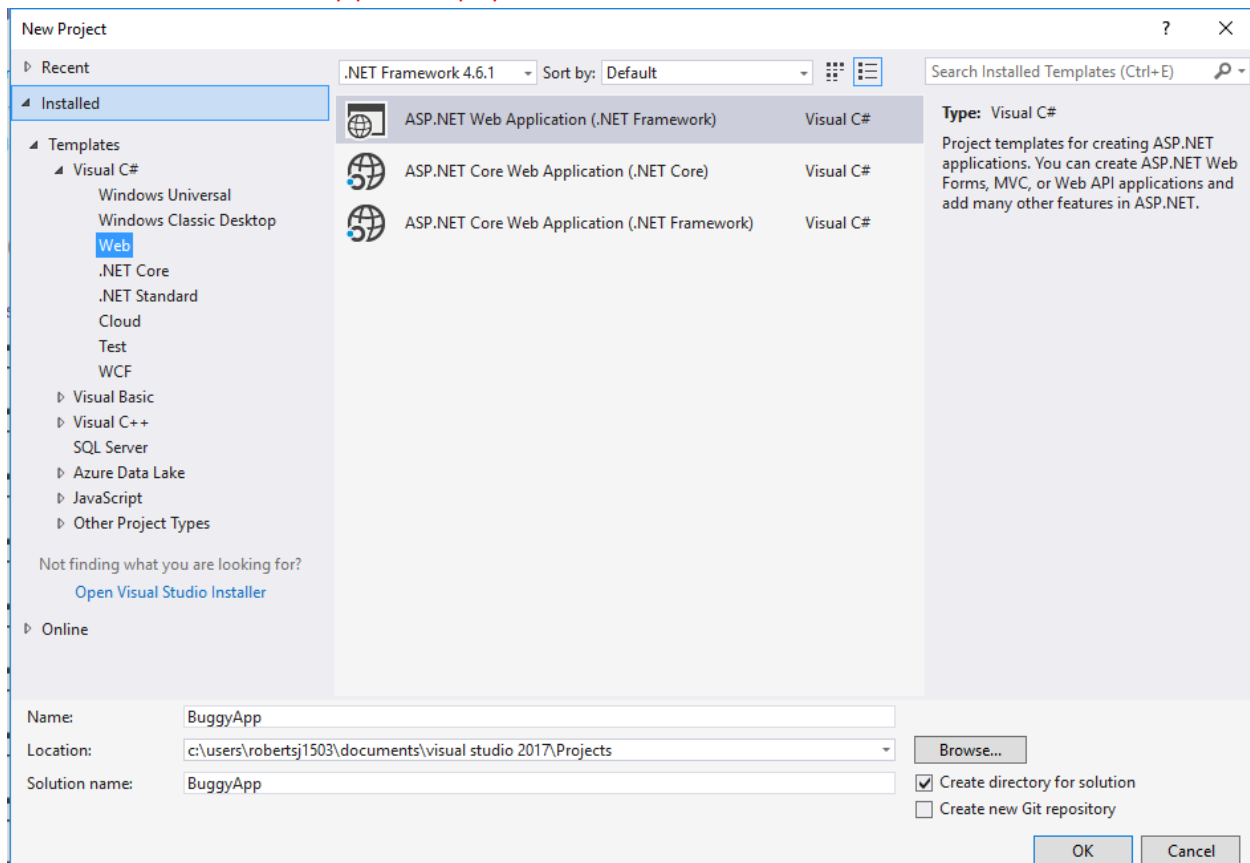
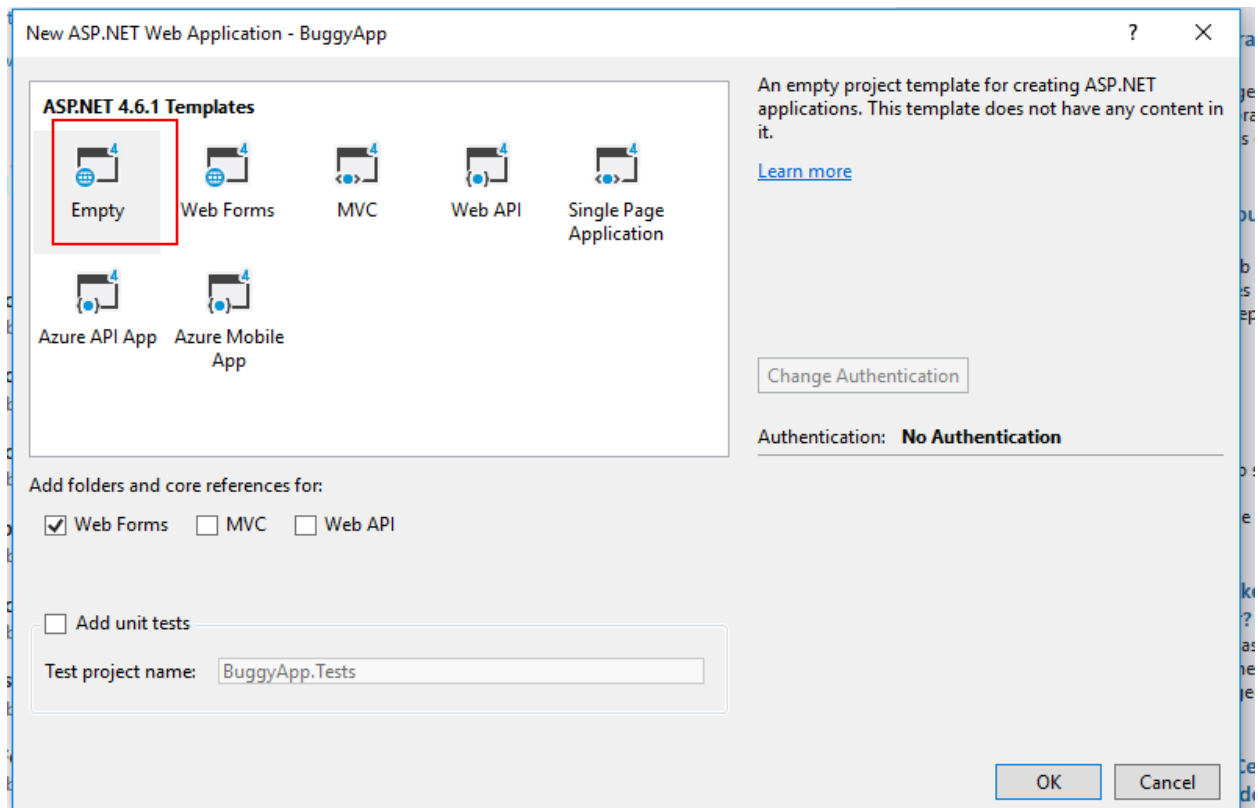


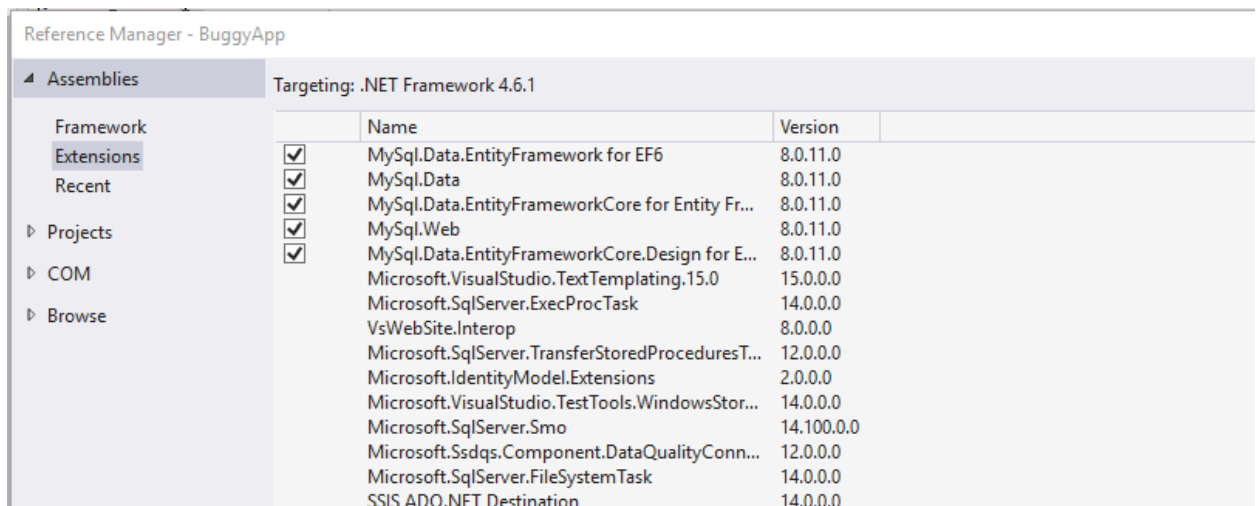
Step by step screenshots for Bug #91136

Create new C# Web App – Empty with Web Form Refs

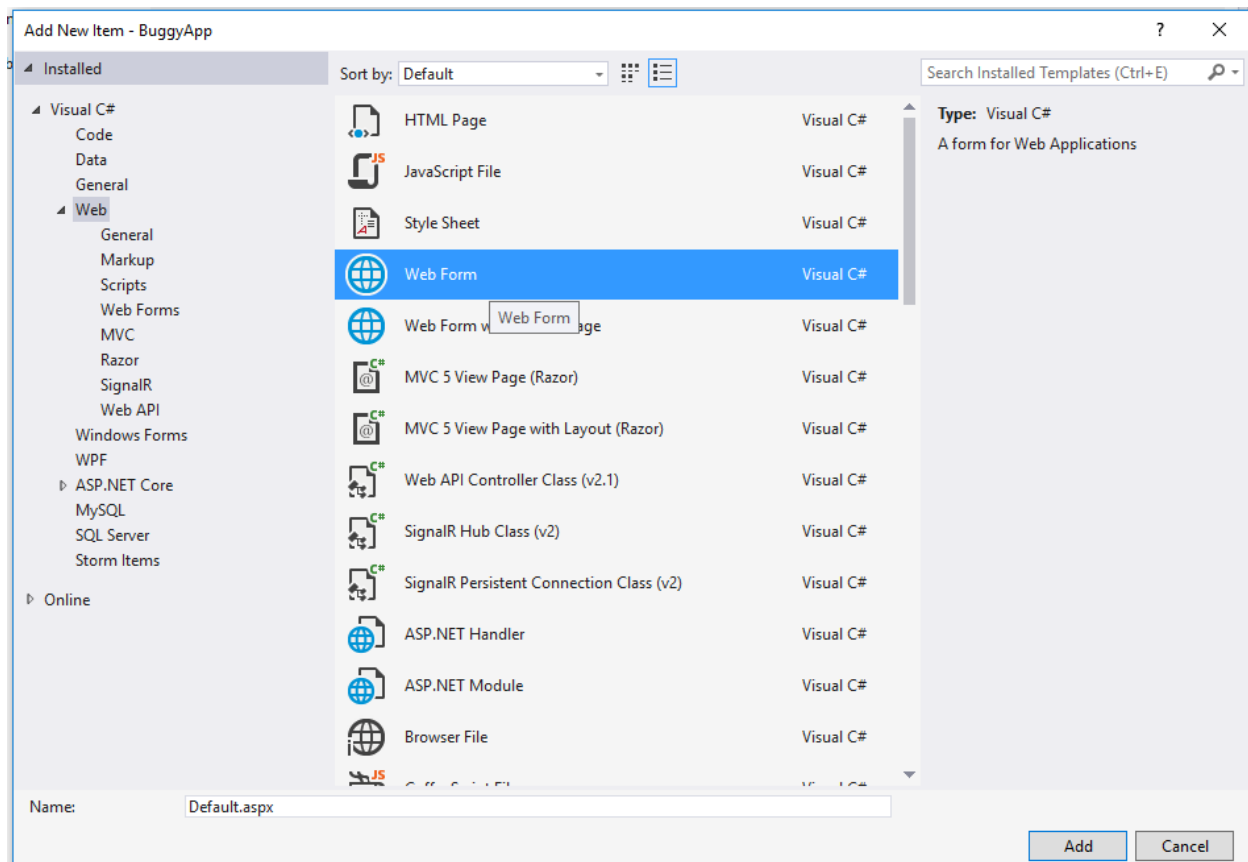




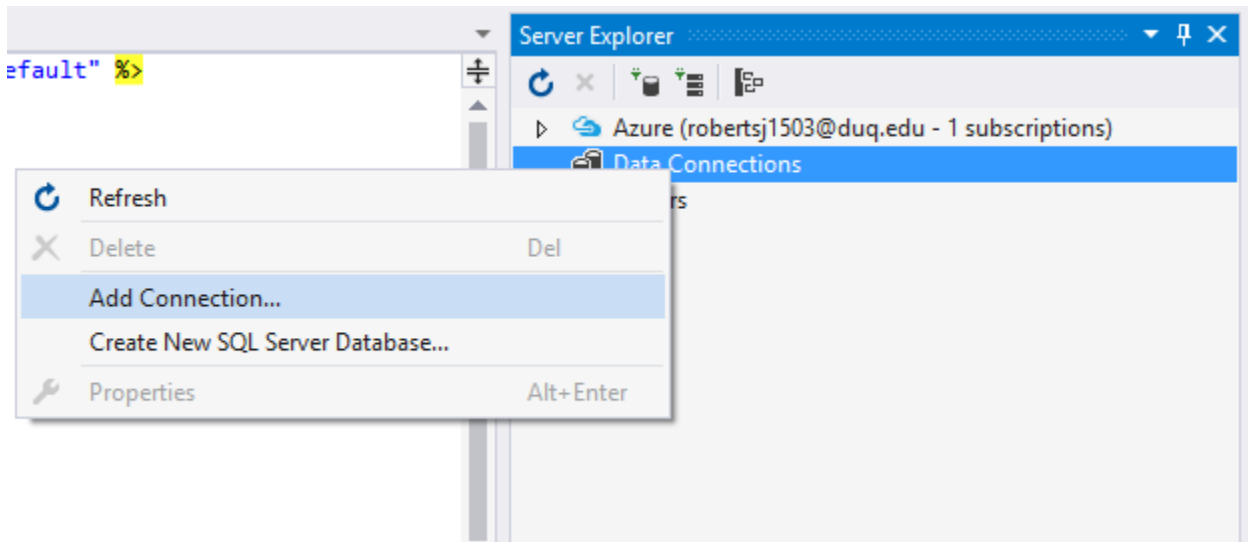
Add references to MySQL



Add Web Form named Default



Use Server Explorer to create a connection to MySQL world sample DB



Add Connection ? X

Enter information to connect to the selected data source or click "Change" to choose a different data source and/or provider.

Data source:
MySQL Database (MySQL Data Provider) Change...

Server name: localhost

User name: root

Password: ●●●●●●●●
☒ Save my password

Database name:
connectsharpmysql
performance_schema
sakila
sys
world

Test Connection

Add Connection ? X


Enter information to connect to the selected data source or click "Change" to choose a different data source and/or provider.

Data source:
MySQL Database (MySQL Data Provider) Change...

Server name:
User name:
Password:
Database name:
Advanced...

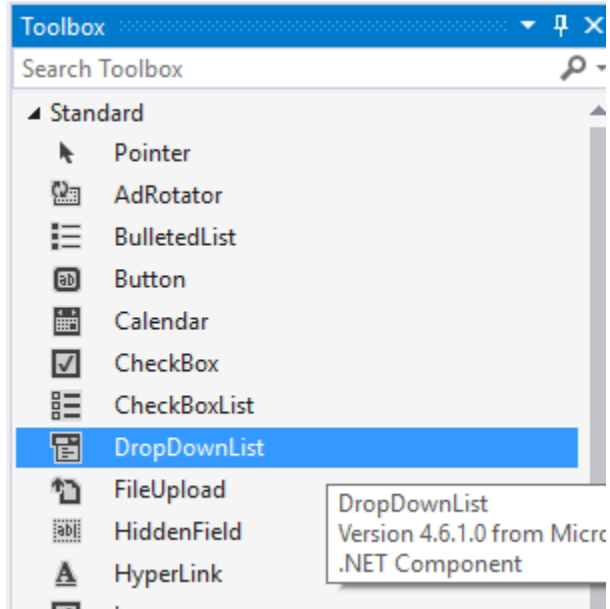
Test Connection OK Cancel

Microsoft Visual Studio X

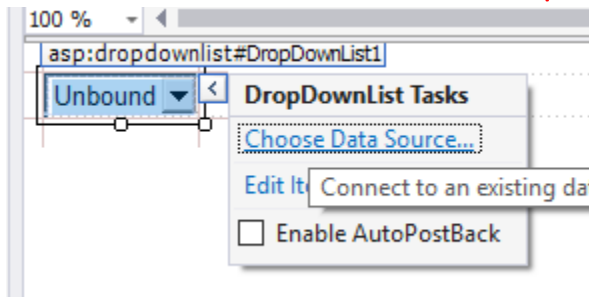
 Test connection succeeded.

OK

Add DDL control to form named **Default**



Add new SQL Data Source named **SqlDataSource1** to the DDL



**Choose a Data Source**

Select a data source:

(None) ▼
(None)
<New data source...>
▼

list:

Select a data field for the value of the DropDownList:

▼

OK

Cancel

Data Source Configuration Wizard



Choose a Data Source Type

Where will the application get data from?



Database



Entity



LINQ



Object



Site Map



XML File


Connect to any SQL database supported by ADO.NET, such as Microsoft SQL Server, C

Specify an ID for the data source:

SqlDataSource1

Use the previously created **localhost(world)** connection

Configure Data Source - SqlDataSource1

 **Choose Your Data Connection**

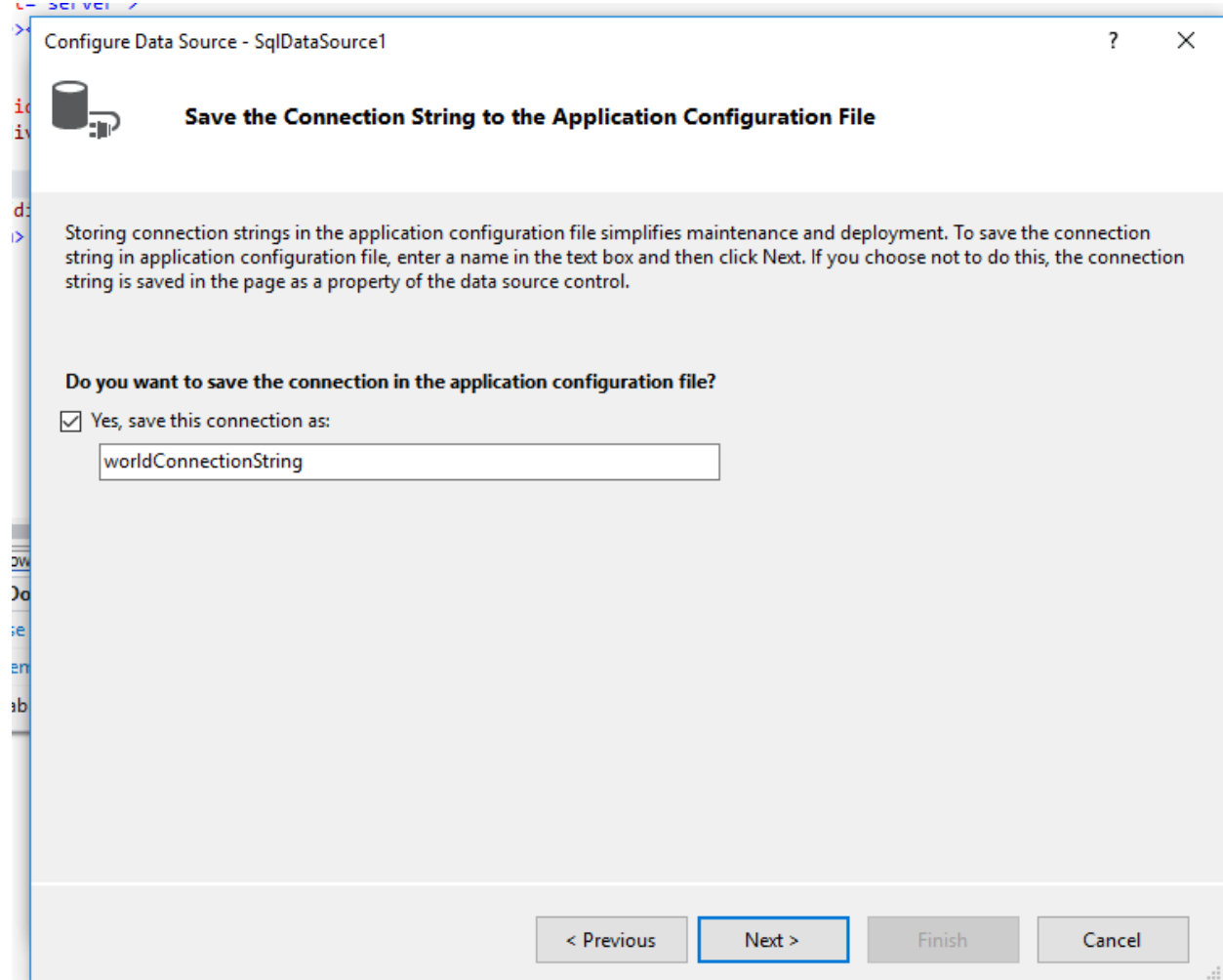
Which data connection should your application use to connect to the database?

localhost(world)

☐ Connection string

server=localhost;user id=root;password=n0tsecure;persistsecurityinfo=True;database=world

Save the connection string to Web.config



Configure Data Source - SqlDataSource1

Save the Connection String to the Application Configuration File

Storing connection strings in the application configuration file simplifies maintenance and deployment. To save the connection string in application configuration file, enter a name in the text box and then click Next. If you choose not to do this, the connection string is saved in the page as a property of the data source control.

Do you want to save the connection in the application configuration file?


☒ Yes, save this connection as:

worldConnectionString

< Previous Next > Finish Cancel

Construct custom query using Query Designer

Configure Data Source - SqlDataSource1

 **Configure the Select Statement**

How would you like to retrieve data from your database?

☒ Specify a custom SQL statement or stored procedure

☐ Specify columns from a table or view

Name:
city

Columns:

- ☒ *
- ☐ ID
- ☐ Name
- ☐ CountryCode
- ☐ District
- ☐ Population

☐ Return only unique rows

WHERE...

ORDER BY...

Advanced...

SELECT statement:
SELECT * FROM [city]

< Previous Next > Finish Cancel

**Define Custom Statements or Stored Procedures**

Click a tab to create a SQL statement for that operation.

SELECT UPDATE INSERT DELETE

☒ SQL statement:

Query Builder...

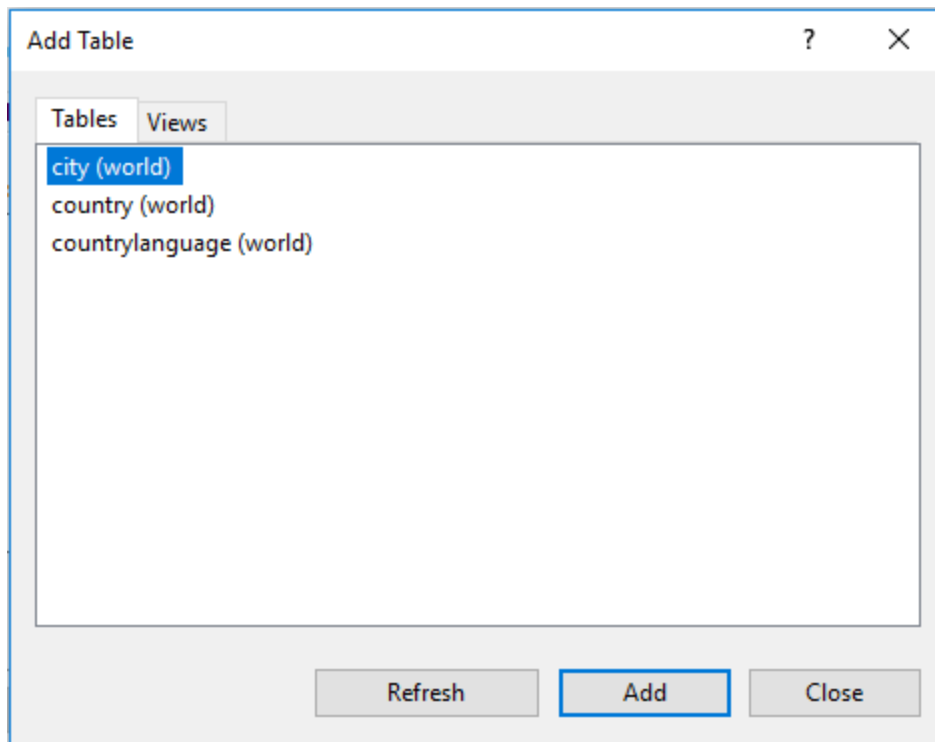
☐ Stored procedure:

< Previous

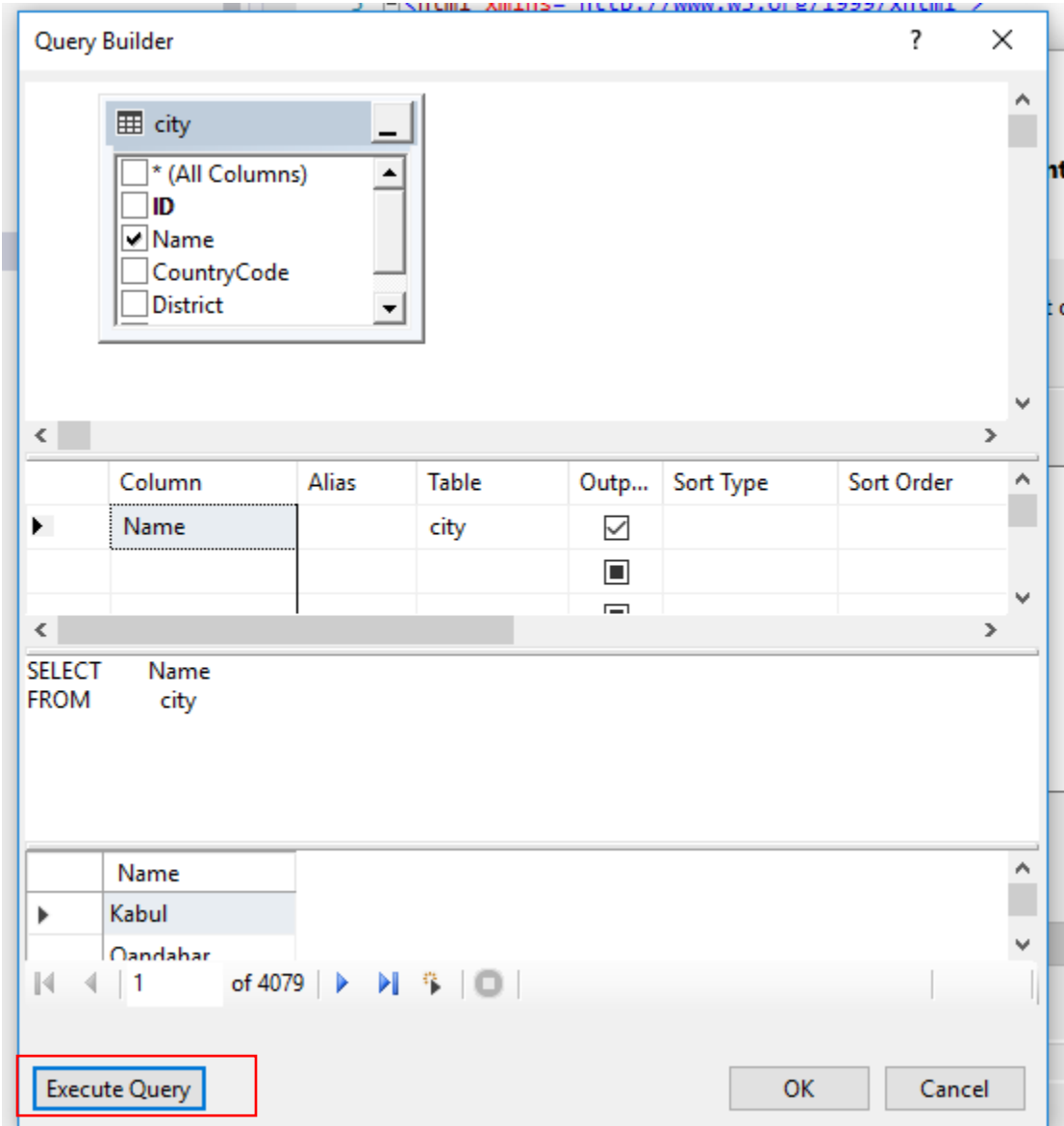
Next >

Finish

Cancel



Execute Query – Success!



**Define Custom Statements or Stored Procedures**

Click a tab to create a SQL statement for that operation.

SELECT UPDATE INSERT DELETE

☒ SQL statement:

SELECT Name FROM city

Query Builder...

☐ Stored procedure:

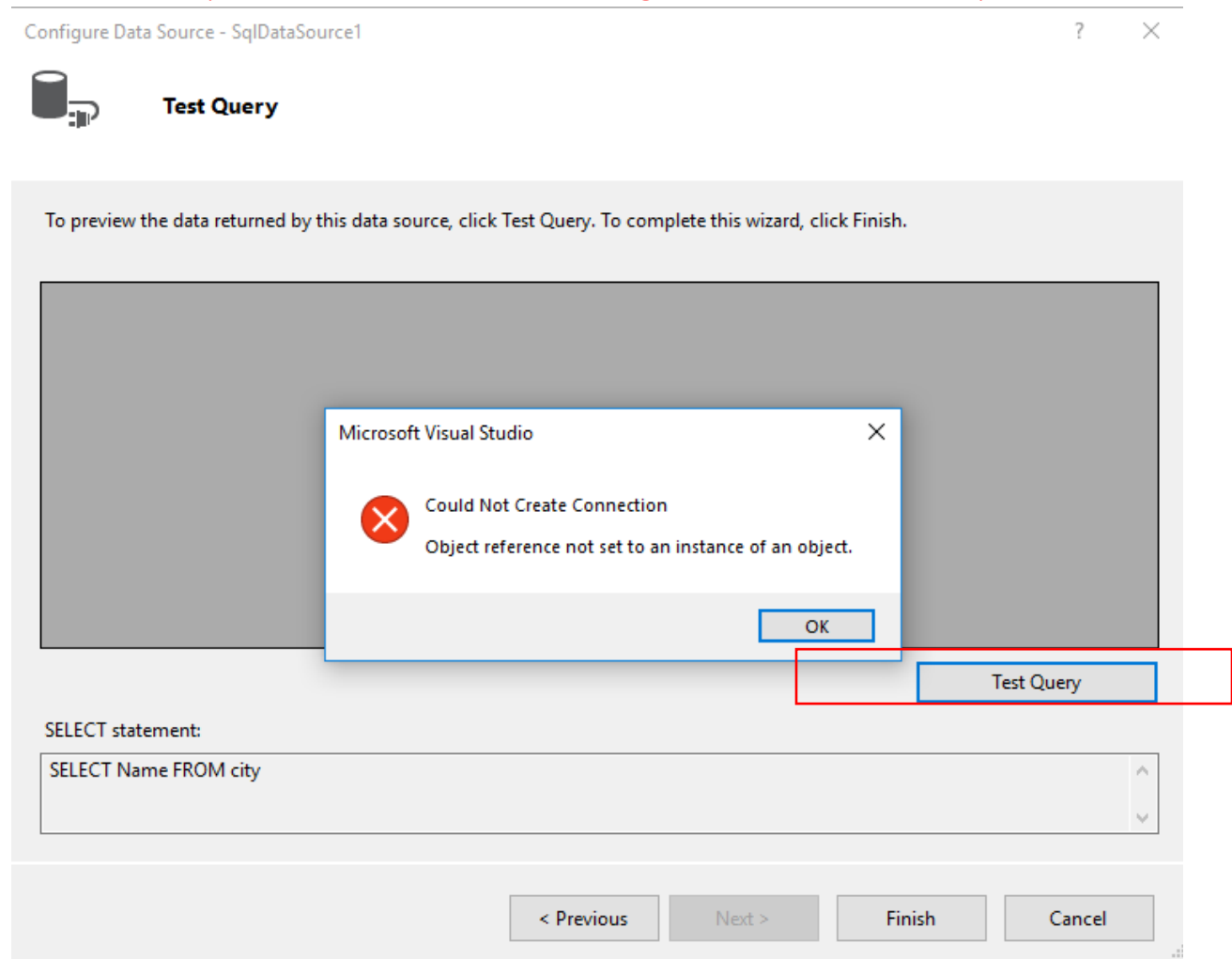
< Previous

Next >

Finish

Cancel

Test the Query back in the Data Source configuration Wizard – No Joy



No fields are available to the DDL from newly configured data source
Data Source Configuration Wizard



Choose a Data Source

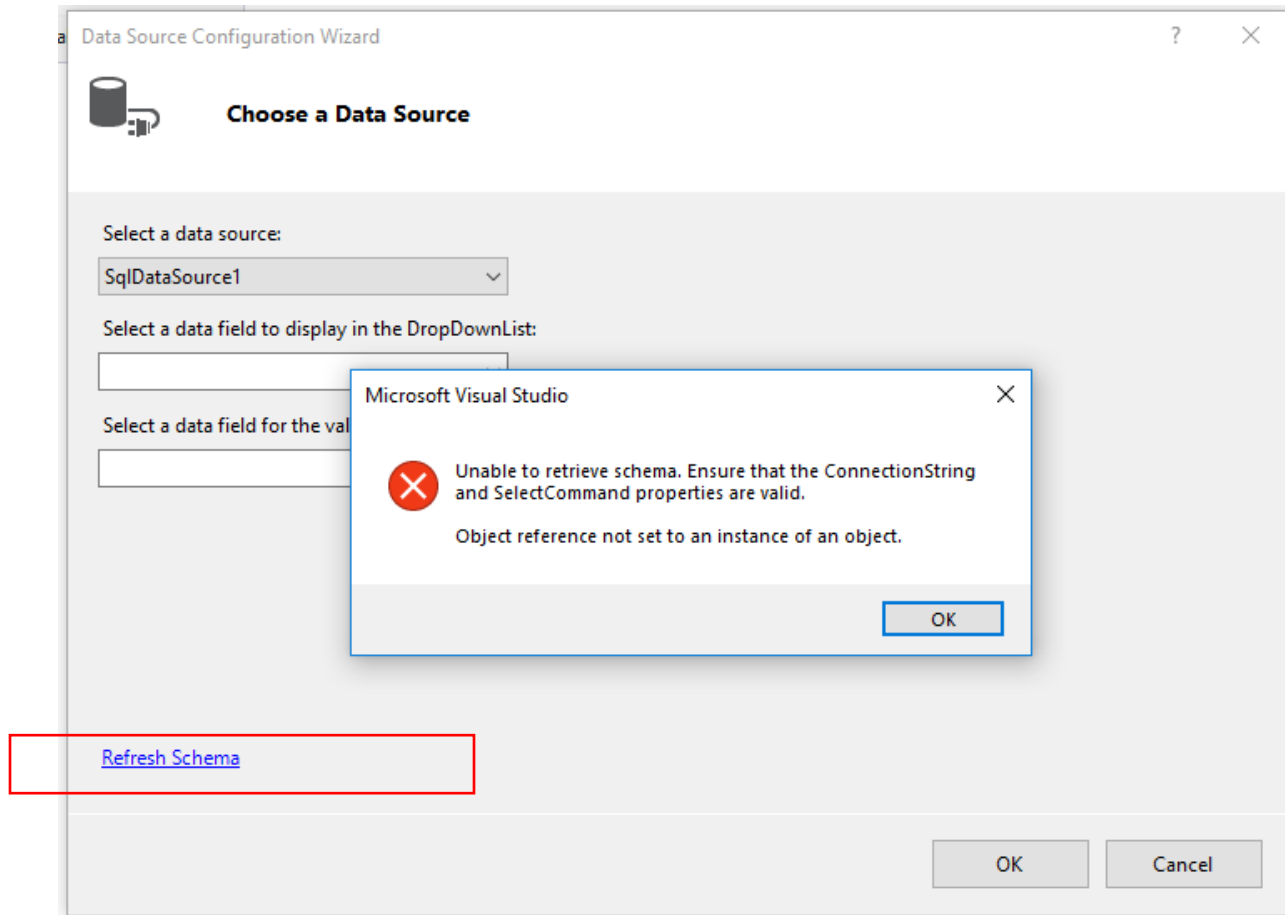
Select a data source:

SqlDataSource1

Select a data field to display in the DropDownList:

Select a data field for the value of the DropDownList:

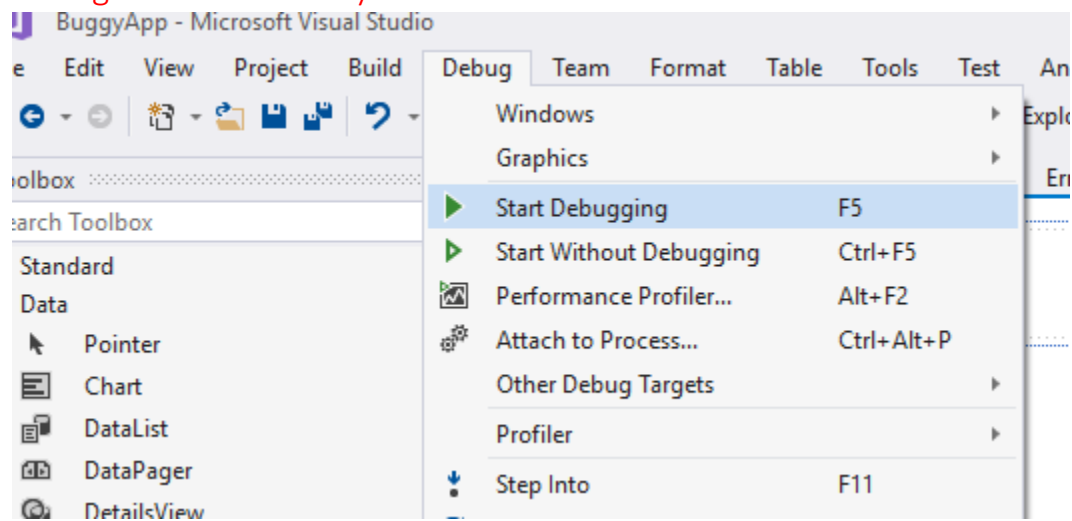
Refresh Schema fails in the same way the app will ultimately fail

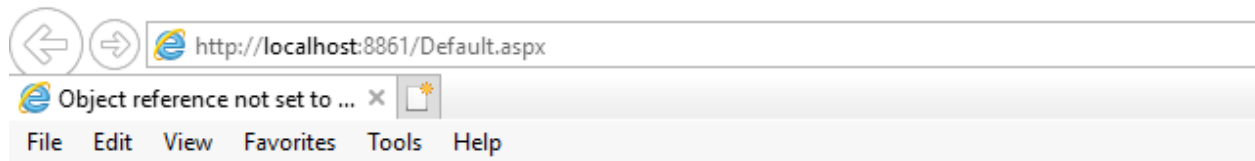


Connection string checks out and can be used to open a connection via code

```
Web.config*  X  Default.aspx*  BuggyApp  Error List ...  Output
1  <?xml version="1.0" encoding="utf-8"?>
2  <!--
3  For more information on how to configure your ASP.NET application, please visit
4  https://go.microsoft.com/fwlink/?LinkId=169433
5  -->
6  <configuration>
7  <connectionStrings>
8  <add name="worldConnectionString"
9  connectionString="server=localhost;user id=root;password=n0tsecure;persistsecurityinfo=True;database=world"
10 providerName="MySql.Data.MySqlClient" />
11 </connectionStrings>
12 </configuration>
```

Debug fails in same way as Refresh Schema





Server Error in '/' Application.

Object reference not set to an instance of an object.

Description: An unhandled exception occurred during the execution of the current web request. Please review the stack trace.

Exception Details: System.NullReferenceException: Object reference not set to an instance of an object.

Source Error:

An unhandled exception was generated during the execution of the current web request. Information about the error has been recorded in the error log.

Stack Trace:

```
[NullReferenceException: Object reference not set to an instance of an object]
System.Web.UI.WebControls.SqlDataSource.CreateDataAdapter(DbCommand command) +133
System.Web.UI.WebControls.SqlDataSourceView.ExecuteSelect(DataSourceSelectCommand command) +133
System.Web.UI.WebControls.ListControl.OnDataBinding(EventArgs e) +364
System.Web.UI.WebControls.ListControl.PerformSelect() +42
System.Web.UI.WebControls.BaseDataBoundControl.EnsureDataBound() +133
System.Web.UI.WebControls.ListControl.OnPreRender(EventArgs e) +35
System.Web.UI.Control.PreRenderRecursiveInternal() +109
System.Web.UI.Control.PreRenderRecursiveInternal() +203
System.Web.UI.Control.PreRenderRecursiveInternal() +203
System.Web.UI.Page.ProcessRequestMain(Boolean includeStagesBeforeAsyncPoint)
```

Version Information: Microsoft .NET Framework Version:4.0.30319; ASP.NET Version:4.7.2633.0