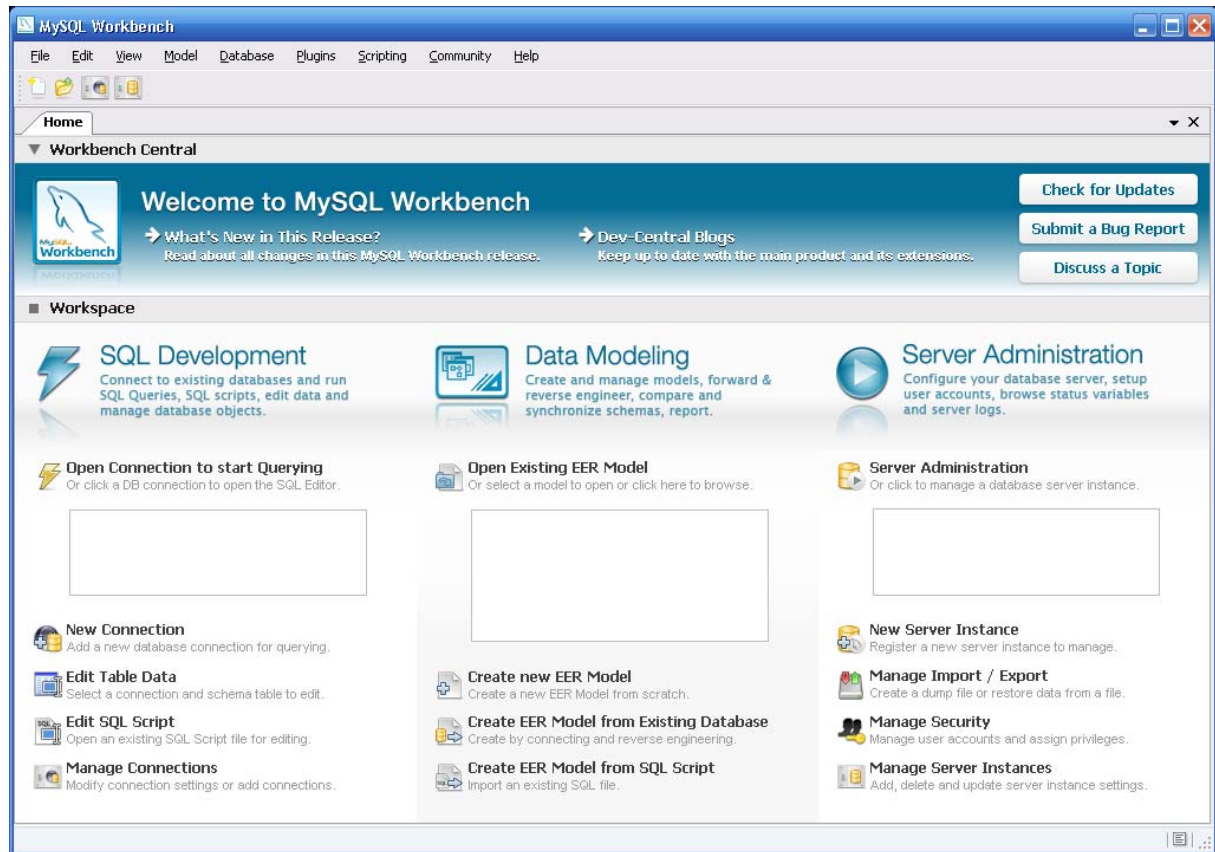


## Start WB 5.2



Clic on « new server instance »

Create New Server Instance Profile

Specify Host Machine

Database Connection

Test DB Connection

Host SSH Connection

Operating System

Test Settings

Review Parameters

MySQL Config File

Specify Commands

Complete Setup

Specify the Host Machine the Database Server is running on

This wizard will guide you to create of a Server Profile to manage a MySQL server. To fully support management of a remote MySQL server, a SSH daemon must be running in the target machine. The SSH login is used to start, stop and configure MySQL. You may create a Profile without SSH if you do not need that functionality.

If your database server is running on the same machine as this application select localhost. Otherwise please specify the TCP/IP address or the network name of the remote machine. You may also pick an existing database connection.

☐ localhost

☒ Remote Host

Address:  Either IP Address or Hostname

☐ Take Parameters from Existing Database Connection

Back

Next

Cancel

Next

Create New Server Instance Profile

Specify Host Machine

Database Connection

Test DB Connection

Host SSH Connection

Operating System

Test Settings

Review Parameters

MySQL Config File

Specify Commands

Complete Setup

Set the Database Connection values

Connection Name:  Type a name for the connection

Connection Method:  Method to use to connect to the RDBMS

Parameters

Advanced

Hostname:  Port:  Name or IP address of the server host - TCP/I

Username:  Name of the user to connect with.

Password:   The user's password.

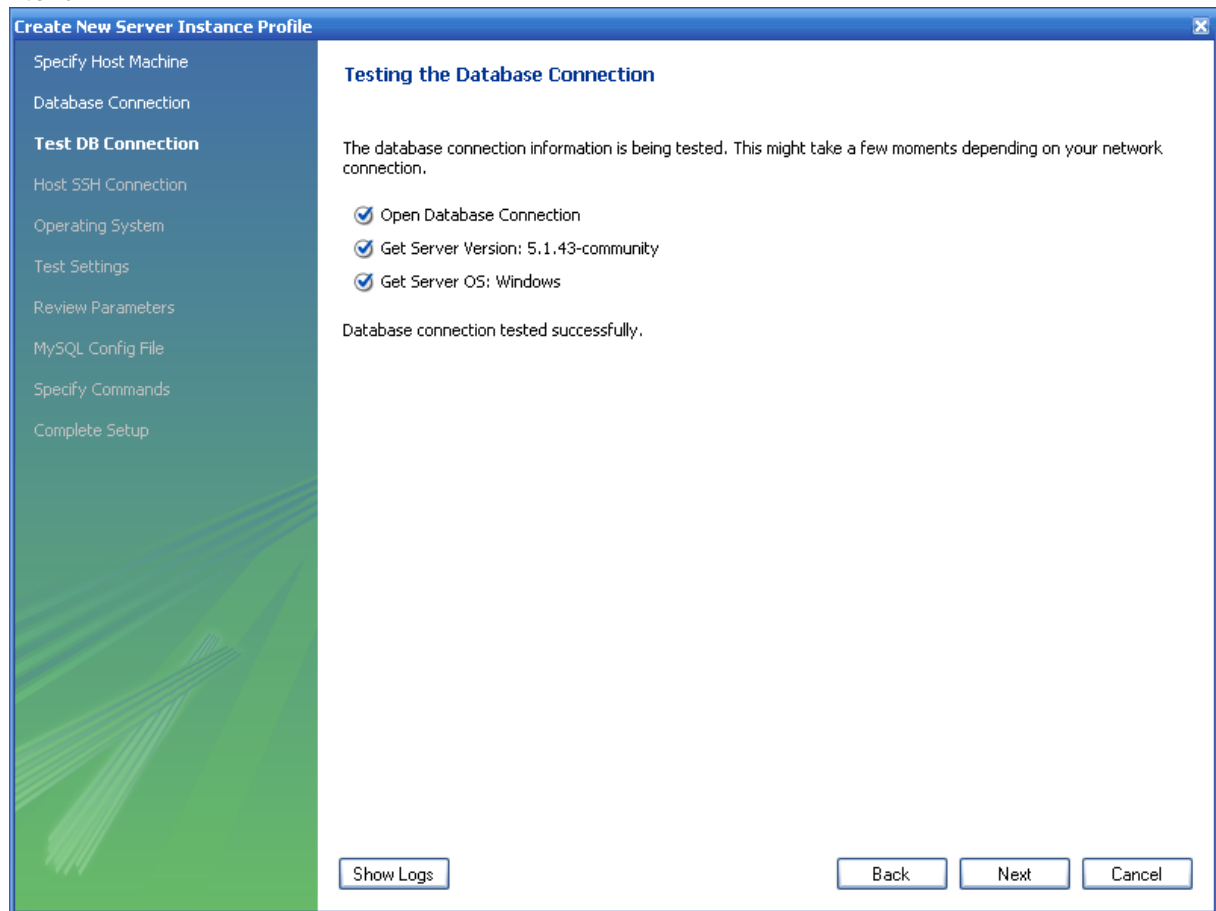
Default Schema:  The schema that will be used as default schem

Back

Next

Cancel

Next



Next

Create New Server Instance Profile

Specify Host Machine

Database Connection

Test DB Connection

Host SSH Connection

Operating System

Test Settings

Review Parameters

MySQL Config File

Specify Commands

Complete Setup

Set remote configuration parameters

In order to remotely configure this database instance an SSH account on this host with appropriate privileges is required. This account needs write access to the my.cnf database config file, read access to the database logs and privileges to start/stop the database daemon.

If you do not have this information or you do not want to remotely configure the database instance please disable the following checkbox.

☐ Enable SSH login based administration

Host Name:  Port:

User Name:

Password:

Leave blank to enter when connecting

☐ Authenticate Using SSH Key

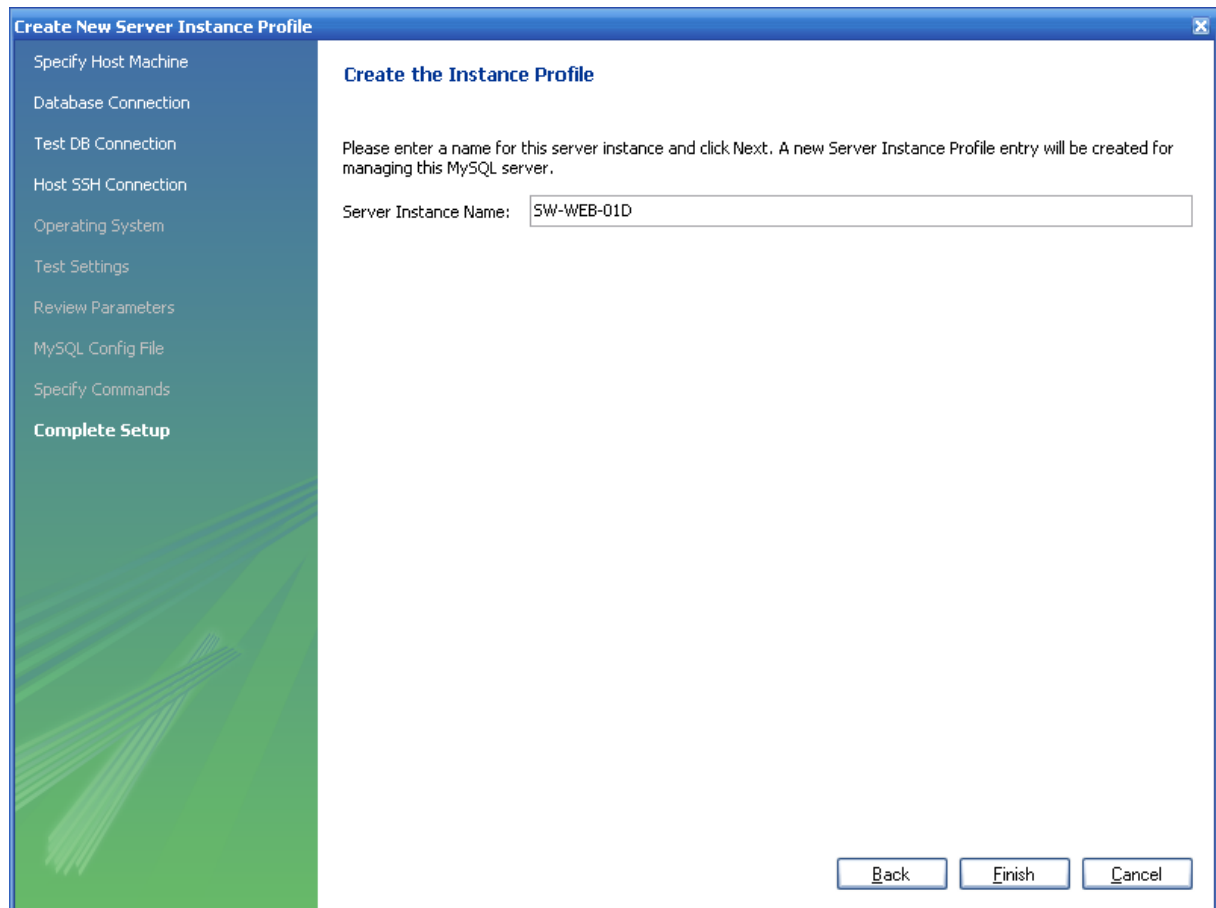
SSH Key Path:  ...

Back

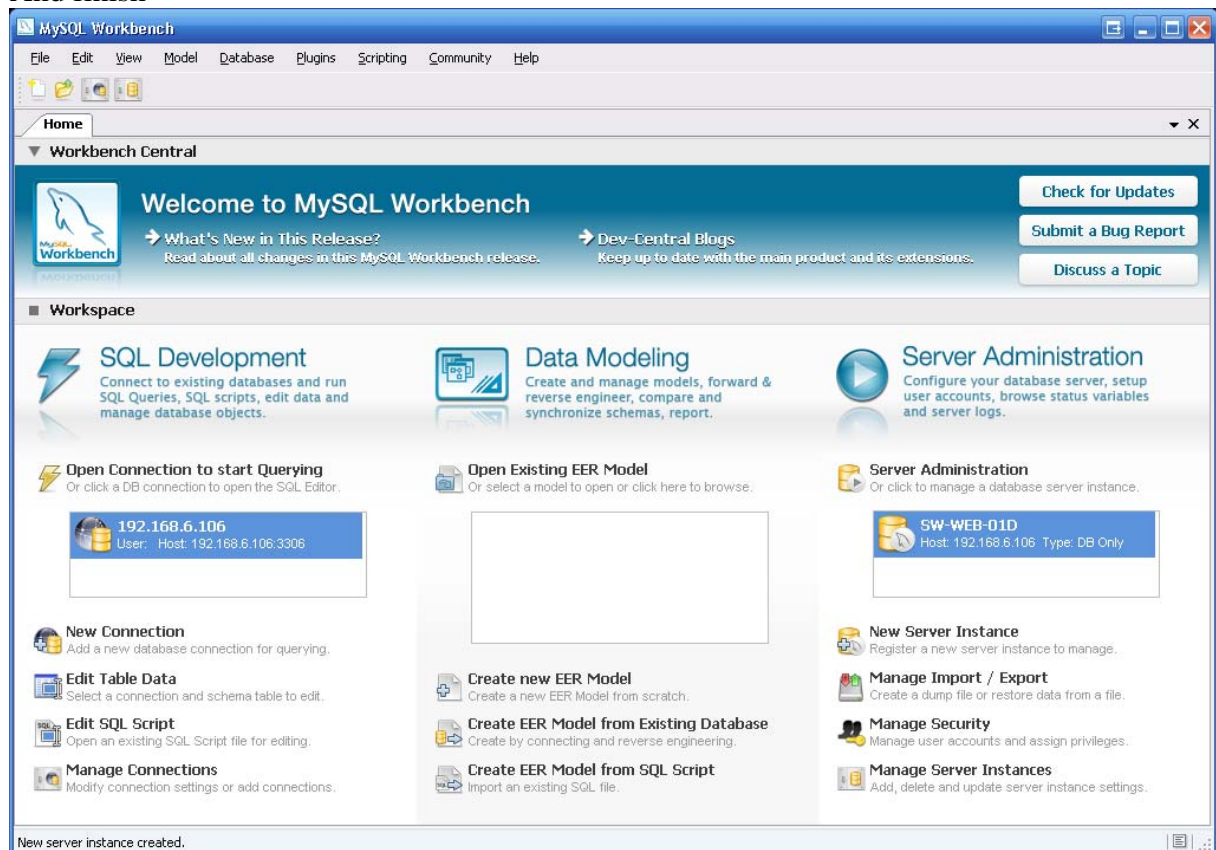
Next

Cancel

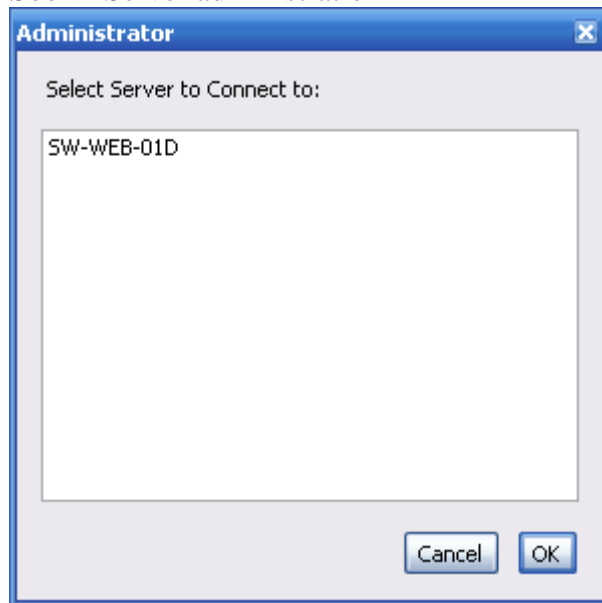
Next



And finish



Soo -> Server administration



Select SW-WEV-01D and OK

Finally

