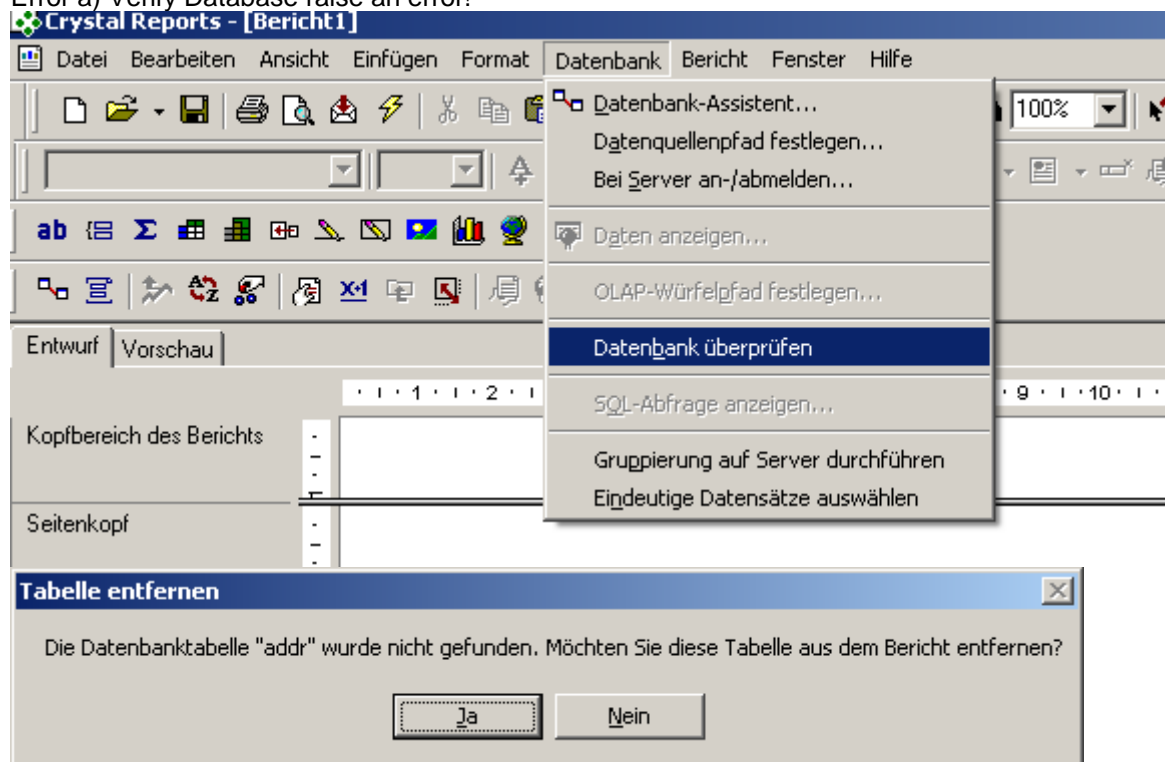
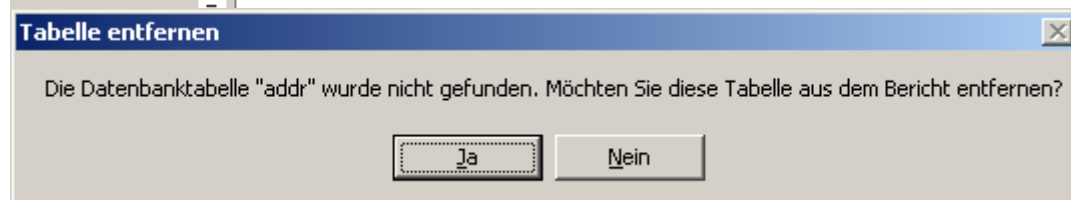
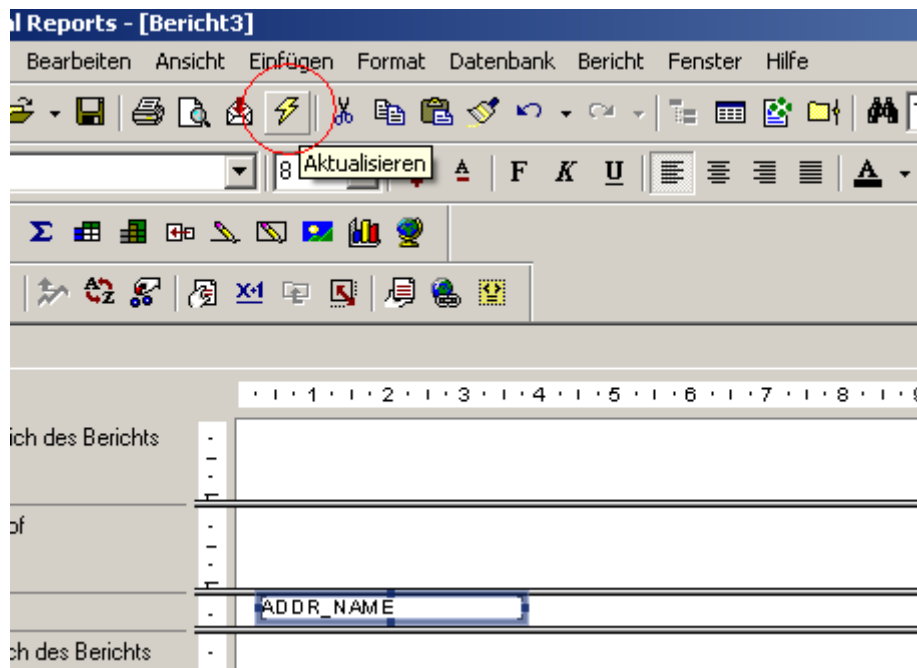
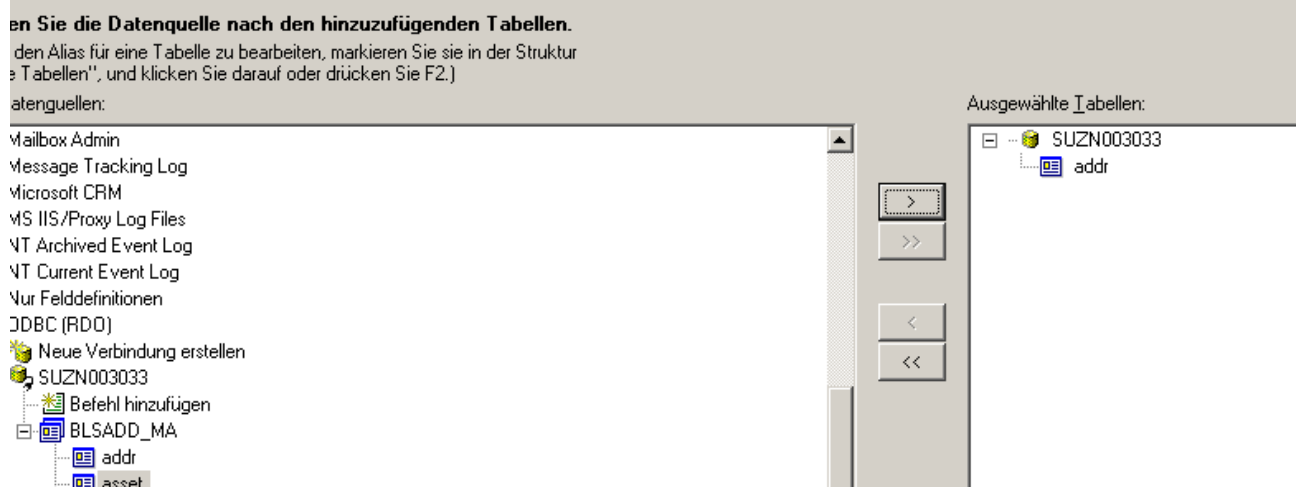


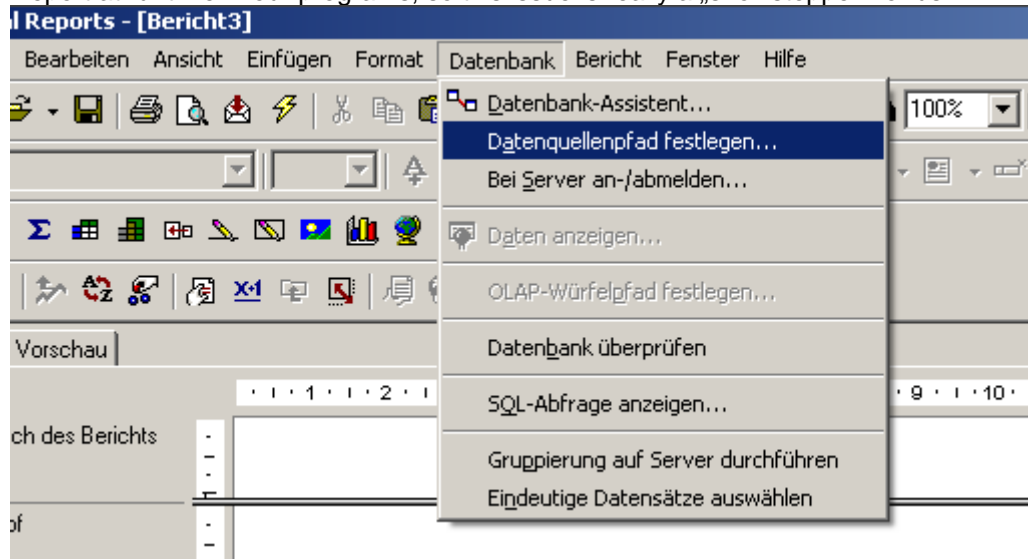
Error a) Verify Database raise an error!

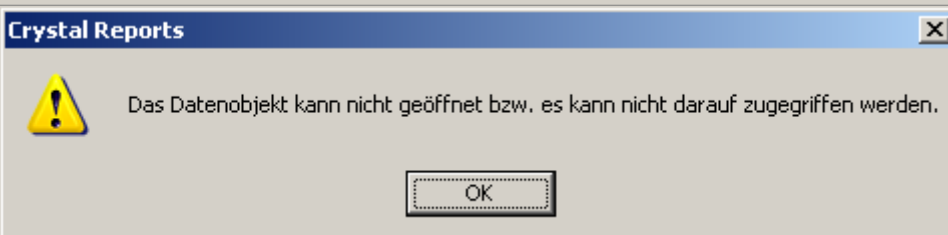
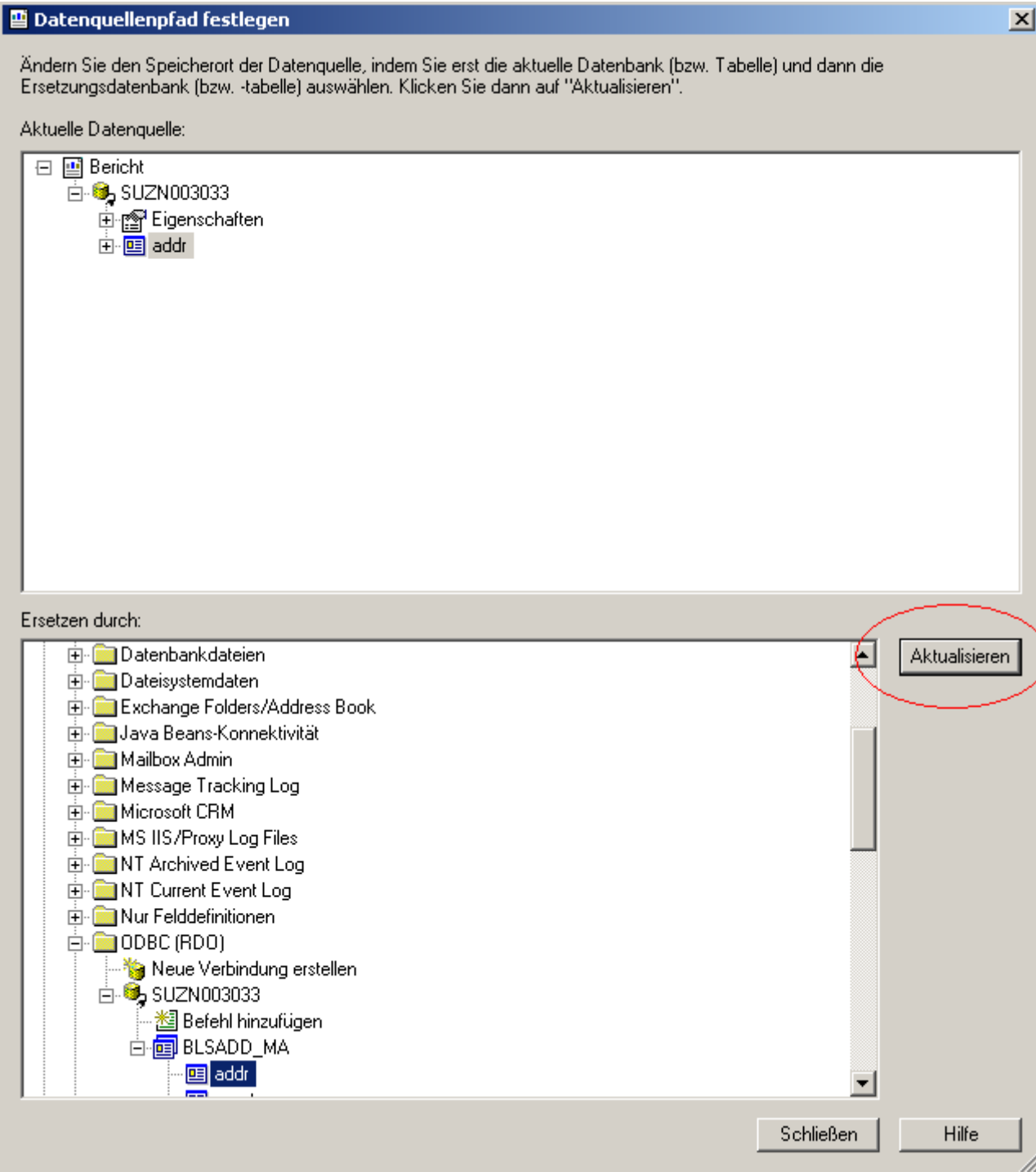


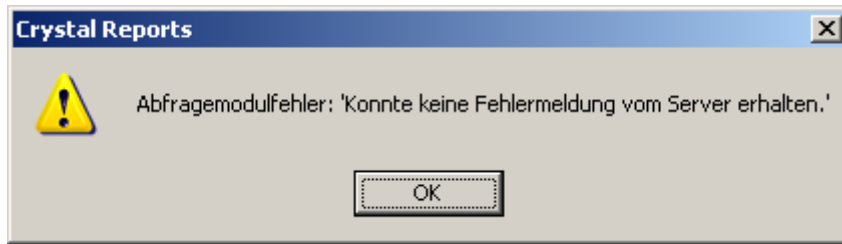
Error b) First Time you run a new Report with a new linked Table and new placed fields he raise an error! (I think it's the same error like a) because Crystal run „Verify Database“ for himself!)



Error c) If you try to UPDATE your Report Database with an other Database (exactly the same structure - but only other name - example: like production & test) crystal raise an error. We change the Database for the Report at runtime in our programs, so this issue is really a „showstopper“ for us.







Conclusion: Your sample works for us too and our old reports do run well with the new driver. BUT if you try to make a new report, there are the errors description above. If you try to update your database structure in the report you ran into problems (again above) and if you have the need of changing the Databasename at runtime you can't live with this driver version. There is a improvement in the driver, but the problem is still partially unsolved.

I think it is very easy to reproduce the error with YOUR report and database. Go to crystal and then Menu „Database/Verify Database“. I think you will see the message above in english ;) If you press YES your table will be deleted from the report. If you press NO everything works fine. It could be that the database was not verified and you will have other problems (see Error b) and Error c) soon.